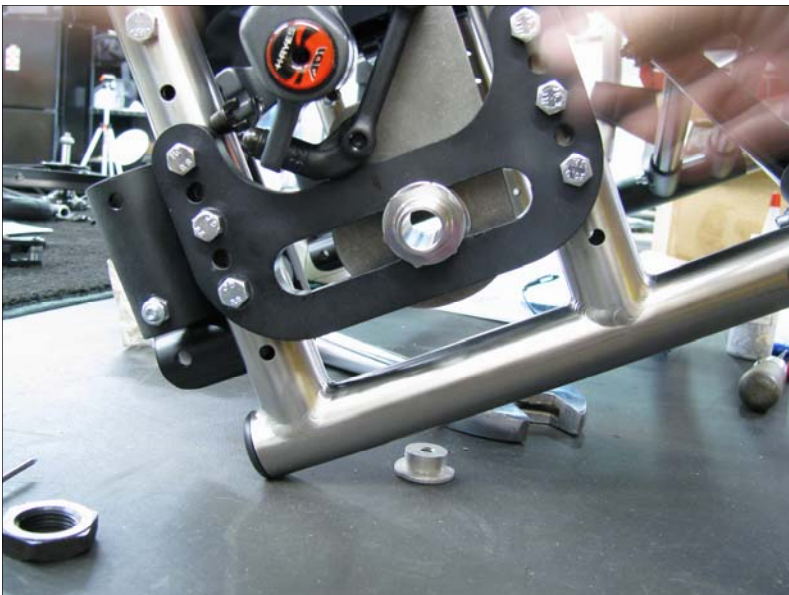


### Step #1

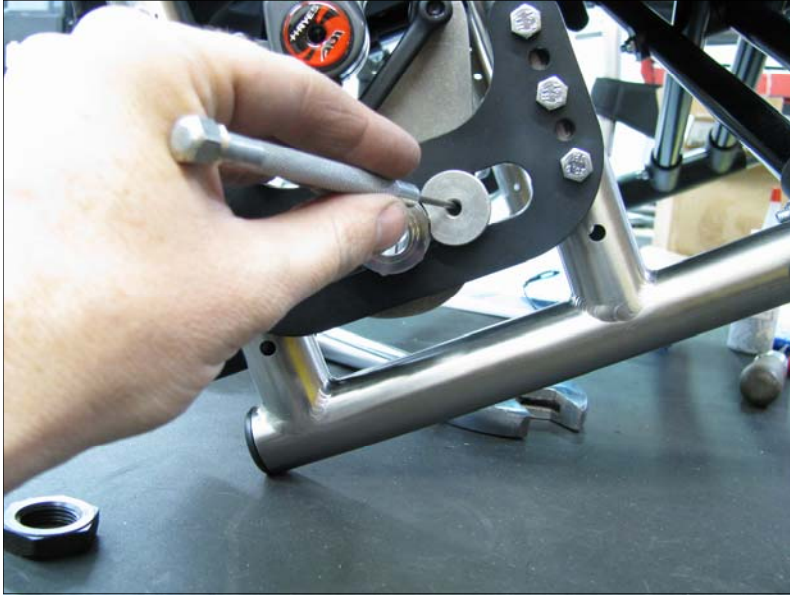
Remove OEM threaded axle receiver, and install ADI's disc brake threaded receiver with one thin 3/4" washer located under the hex head.



### Step #2a.

Temporarily install caliper mount plate, with caliper and bracket attached. Check for caliper clearance, while determining the optimal axle CG position (forward/aft).

Note: before deciding on the final caliper location, check cable input clearance, etc...



### Step #3

Temporarily set up the anchoring block into the camber plate slot and mark on the caliper mounting plate the center line of the .250" hole to be drilled.



### Step #4

Drill .250" hole



### Step #5

Reinstall caliper mounting plate using the ADI threaded insert without caliper and U-bracket. Install the 1/4-20 x .750 socket head bolt with loctite into the anchoring block.





Step #6

Tighten 3/4-16 nut with the locking serrated washer.

Step #7

Install disc snap ring



Step #8

Attach caliper with u-bracket over disc with m6x20 mounting bolts using a single washer and spacer between u-bracket and caliper plate for correct disc alignment.